



**ZIMBALI**  
LODGE

BALLITO | KWAZULU-NATAL

## WELCOME TO ZIMBALI LODGE

### CHECK-IN & CHECK-OUT TIMES

- Check-in from 14:00
- Check-out before 11:00
- Late check-outs will be subject to an additional charge

### LODGE OPERATIONAL HOURS

- The lodge is operational 24Hours. In the event of an emergency please contact the Duty Manager on 071 724 8066 for assistance.

### RESORT FACILITIES

- Trophy Bar
- Restaurant
- The Valley of the Pools
- Golf course
- Bush Buck Club
- 24hr reception desk
- Pool
- Tennis courts
- Recreation and games
- Laundry service
- Conference facilities
- Shuttle service
- Wedding venue

### PLEASE NOTE:

- No pets allowed.
- No smoking policy applies
- Swimming towels are provided
- The view of the sea is only from the lodge swimming pool
- No-swimming beach, no shark nets and no lifeguards.
- No undercover parking available
- Golf carts are not available for rental
- Transport to all facilities on the estate is available (additional cost). Alternatively, by foot, it is a leisurely 20min walk away, along the beach path next to Block 7. Kindly enquire at reception.
- Guests will have full access to all on-site facilities. Some activities will incur a fee. Enquiries can be made at reception.
- The Valley of the Pools – beach access (no swimming), restaurant, swimming pools (one heated pool).
- The Bushbuck Club – café, seasonal beverage bar, gymnasium, floodlit tennis courts, squash court, swimming pool & kids play area with water slide, soccer area, trampolines, and jungle gyms.

- The Zimbali Country Club – pro shop, golf and driving range. Please book in advance 032 538-1041
- Nature Trails and birdwatching
- Guests will receive an access code in the form of an SMS a day prior to their occupation date. This code will be required by security at the gate
- Upon arrival at the Zimbali Coastal Eco-estate North Gate entrance, guests will need to present their driver's license and a copy of their reservation confirmation. Please keep these documents on hand to ensure that your arrival is efficient.
- The room key that is issued to you will enable you to enter and exit the Zimbali Coastal Eco-estate during your stay at Zimbali Lodge
- WhatsApp line is only available from 08h00 till 17h00 and is not available afterhours (Monday till Friday).

#### DINING AT THE POOL DECK & TROPHY BAR

Operating days & times are as follows:

- Monday–Sunday:
 

Breakfast Service	07:00–10:30
Lunch Service	11:30–17:00
Dinner Service	18:00-22:00
Bar Service	10:00–23:00
- Halaal meals available on request. Kindly notify reception a minimum of 48 hours prior to arrival.

#### LOAD SHEDDING & POWER INFORMATION

- The resort is equipped with a backup generator in case of load shedding or Eskom technical difficulties.
- In the unlikely event of a technical failure with the generator, please be aware that the resort does not have any battery-operated lighting available. We will endeavour to work as fast as possible to resolve the issue.

- Certain services and facilities may not be available during load shedding times. Please contact the resort to familiarise yourself with these interruptions.
- The resort may be restricted to operating times and/or duration of the backup generator due to legislation/regulations in certain areas, as well as generator capacity. Please contact the resort for further information.
- Due to the high running cost of generators, a daily generator fuel levy may be applied at the resort to ensure uninterrupted power to your room. Please contact the resort for further information.

#### ACCOMMODATION

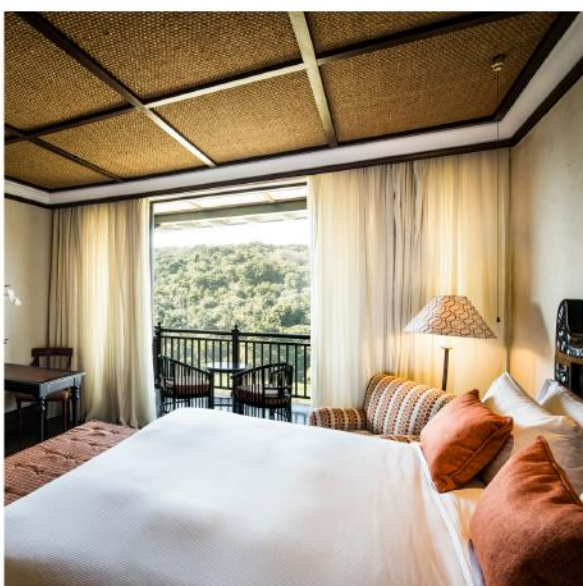
- All rooms have a forest or garden view. There are NO sea views from the rooms

##### Superior King Room

- Forest/garden view
- Bedroom with a double bed and walk-in change room with en suite bathroom
- Sleeps a maximum of 2 adults

##### Deluxe Suite

- Forest/garden view
- Bedroom with a double bed and open-plan lounge area, walk-in change area and en suite bathroom
- Sleeps a maximum of 2 adults



### Luxury Twin Room

- Forest/garden view
- Bedroom with 2 single beds and walk-in change room with en suite bathroom
- Sleeps a maximum of 2 adults

### One Bedroom Presidential Suite

- Bedroom with a king-size bed and en suite bathroom with bath and shower
- Sleeper couch for children under 12 years
- Open plan lounge with kitchenette (fridge/freezer, microwave, dishwasher, stove with oven, washing machine).
- Balcony
- Sleeps a maximum of 2 adults and 2 children under 12 years

### Two Bedroom Presidential Suite

- Master bedroom with king-size bed and en suite bathroom with bath and shower
- Second bedroom with king-size bed and en suite bathroom with bath and shower
- Sleeper couch for children under 12 years
- Open plan lounge with kitchenette (fridge/freezer, microwave, dishwasher, stove with oven, washing machine).
- Balcony
- Sleeps a maximum of 4 adults and 2 children under 12 years

### ROOM FACILITIES

- Air con
- DSTV (selected channels)
- Multi electric plugs (for international use)
- Coffee/tea facilities
- Bar fridge
- Hair dryer
- Safe
- Linen and bath towels
- Housekeeping\*
- Private balcony
- Wi-Fi

### SPA

Mangwanani Spa is available, bookings can be done via [Zimbalilodge@mangwanani.co.za](mailto:Zimbalilodge@mangwanani.co.za)

### TRANSPORTATION

- As a precautionary measure shuttle services within the estate are limited to the Valley of the Pools, which operates from Monday–Sunday weekly.
- There is a fee for all non-Vacation Club members. To book this service, please contact the reception desk from 08:00–17:00 or call 071 724 8066. Shuttle operating times are as follows:  
**Lodge Porte Cochere to Valley of the Pools:**  
08:00, 09:00, 10:00, 11:00, 12:00, 13:00, 14:00 15:00, 16:00, 17:00, 18:00  
**Valley of the Pools to the Lodge Porte Cochere:**  
08:15, 09:15, 10:15, 11:15, 12:15, 13:15  
14:15, 15:15, 16:15, 17:15, 18:15, 19:00

### ADDRESS

1 Lodge Lane, Zimbali Coastal Estate, Ballito

### DIRECTIONS

#### From King Shaka International Airport (19.4km)

- Take the N2 North highway towards Stanger/Richards Bay
- Go through the Tongaat Plaza tollgate
- Drive further for about 5km and take the Ballito/Compensation off-ramp (No. 210)
- Turn right over the highway, past the Shell garage and turn right on to the M4 road to Durban
- Zimbali Lodge is located on the left-hand side and is clearly marked by signage

#### From Umhlanga Rocks (30.1km)

- Take the M4 and drive north towards Ballito
- Pass Umdloti, La Mercy, Desaingier, Tongaat and Westbrook
- Zimbali Coastal Eco-estate is a 5min drive from Westbrook and is located on the right-hand side
- GPS: 29.5513'S, 31.2059'E

### CONTACT DETAILS

Reservations: +27 (0)861 010 347 | Reception: +27 (0)32 001 0550 or WhatsApp +27 (0)65 703 9038  
E: [zimbali@dreamresorts.co.za](mailto:zimbali@dreamresorts.co.za) | [www.dreamresorts.co.za](http://www.dreamresorts.co.za)