



DREAM
HOTELS & RESORTS

24hr Central Reservations: +27 (0)861 010 347
reservations@dreamresorts.co.za
www.dreamresorts.co.za



CAPE TOWN | WESTERN CAPE

WELCOME TO THE PENINSULA ALL-SUITE HOTEL

CHECK-IN & CHECK-OUT TIMES

- Check-in from 14:00
- Check-out before 10:00
- Late check-outs will be subject to an additional charge

RESORT FACILITIES

- Sunset Restaurant
- Strolla Restaurant & Bar
- Faces Cocktail Bar
- Grocery service
- Parking (covered)
- Babysitting
- Laundry service
- Gym and sauna
- Pool
- Heated pool
- Games room
- Live entertainment (every Thursday)
- Medical facility
- Shuttle service (8km radius)

- Airport transfers
- Concierge and travel desk
- Guest relations desk
- Business centre
- Conference facilities
- 24hr room service
- Kids programme

PLEASE NOTE:

- No pets allowed
- No smoking policy applies – only on balconies
- Swimming towels are provided
- A key/breakage deposit of R500 is payable on arrival (subject to change)
- There is limited parking available at the hotel at R65 per vehicle (subject to change)
- Guests can make use of the communal braai facilities. Charcoal is available at R120 and gas at R80 (subject to change)
- Wheelchair-friendly units are available on request
- WhatsApp line is only available from 08h00 till 17h00 and is not available afterhours (Mon – Fri)

ACCOMMODATION

- Self-catering
- All rooms have views of the promenade, Atlantic Ocean and Robben Island

Mini Suites

- Sea view
- Fully-equipped kitchen
- Open-plan bedroom with separate bathroom or en suite bedroom with a separate lounge
- Sleeper couch
- Sleeps a maximum of 2 adults and 2 children under 12

Studio Suites

- Sea view
- Separate kitchenette
- Open-plan bedroom with a balcony, lounge and bathroom with shower
- Sleeper couch
- Sleeps a maximum of 2 adults and 2 children under 12
- Wheelchair-friendly unit available

Luxury Suites

- Sea view
- Open-plan kitchen
- Main bedroom and en suite bathroom with spa bath
- Second bedroom with 2 single beds and a separate shower and toilet
- Lounge with sleeper couch

- Sleeps a maximum of 4 adults and 2 children under 12
- Wheelchair-friendly unit available

Super Luxury Suites

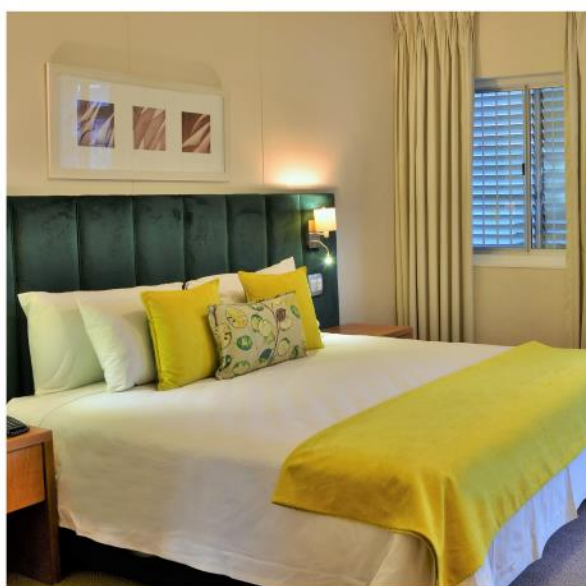
- Sea view
- Open-plan kitchen
- Main bedroom and en suite bathroom with spa bath
- Second bedroom with 2 single beds and a separate shower and toilet
- Furnished balcony area
- Lounge with sleeper couch
- Sleeps a maximum of 4 adults and 2 children under 12

Royal Suites

- Sea view
- Fully-equipped kitchen and dining area
- Main bedroom and en suite bathroom with spa bath
- 2 additional bedrooms with 2 single beds and separate 1.5 bathrooms
- Furnished balcony area
- Open-plan lounge with sleeper couch
- Sleeps a maximum of 6 adults and 2 children under 12

Please Note:

Due to the current loadshedding schedules in South Africa we will be implementing a supplementary charge per room per day in



order to maintain a continuous power supply to your suite.

Maintenance

Our gym will be undergoing a refurbishment and therefore will not be available for use from 08 till 12 May 2023. We apologise in advance for the inconvenience caused.

Please Note:

We will be upgrading our lifts from Monday 08 May 2023 until Friday 15 December 2023. There will always be 1 lift in operation at any given time our guests are welcome to also use our service lift during this time. This may cause some inconvenience for which we would like to apologise in advance, but this is necessary in order to enhance the quality of our building.

ROOM FACILITIES

- Air con
- Fan/heater
- Fridge/freezer
- Cutlery and crockery
- Stove
- Oven (in most units)
- Microwave
- DSTV (selected channels)

- Radio
- Telephone
- Safe
- Linen and bath towels
- Housekeeping
- Private patio
- Wi-Fi

ADDRESS

313 Beach Road, Sea Point, Cape Town, 8005

DIRECTIONS

From Cape Town International Airport (26km)

- Take the N2 towards the city
 - Follow the Sea Point sign until the highway ends on the outskirts of the CBD
 - Cross the traffic lights and take a right at the second set of traffic lights
 - At the circle, go halfway around to continue straight
 - Once you are on Beach Road, continue all the way to the end for about 4km. You will see the Peninsula All-Suite Hotel on your left
- GPS: -33.922858'S, 18.377974'E

CONTACT DETAILS

Reservations: +27 (0)861 010 347 | Reception: +27 (0)21 430 7777 or WhatsApp +27 (0)78 096 0227
E: peninsula@dreamresorts.co.za | www.dreamresorts.co.za